

**Wheaton College 4-year General Engineering Plan**

**THIS PROGRAM PLAN IS FOR GUIDANCE ONLY. GRADUATION REQUIREMENTS ARE FOUND IN CATALOGS.**

54 CATC (3x 2 tags), 30 math & science, 45 ENGR

Engineering Core

Engineering Concentration

Supporting Science & Math

CATC

**Civil/Environmental Engineering  
Concentration**

Fall Semester

Sem	Code	Name	Hrs.
1	MATH 235	Calculus I (AAQR)	4
	PHYS 231	Introductory Physics I (SP)	4
	ENGR 101	Introduction to Engineering	1
	CORE 101	First Year Seminar	4
	ENGW 103	Writing (0-4)	4
<i>Total</i>			17

Spring Semester

Sem	Code	Name	Hrs.
2	MATH 236	Calculus II	4
	PHYS 232	Introductory Physics II	4
	ENGR 132	Engineering Graphics and CAD	3
	COMM 101	Oral Communication (0-2)	2
	BITH 211	Old Testament Literature	4
<i>Total</i>			17

3	MATH 237	Calculus III	4
	ENGR 211	Engr. Mechanics I - Statics w lab	3
	ENGR 334	Comp. Modeling of Phys. Syst.	2
	ENGR 351	Analog Electronics w lab	2
	LANG	Language Core Competency I	4
<i>Total</i>			15

4	MATH 333	Differential Equations	4
	ENGR 212	Engr. Mechanics II - Dynamics w lab	3
	ENGR 214	Innovative Design in Engr.	3
	LANG	Language Core Competency II	4
	SELECT	Visual & Performing Art (1 of 2)	2
<i>Total</i>			16

5	CHEM 231	General Chemistry I	4
	ENGR 313	Mechanics of Materials w lab	3
	ENGR 336	Fluid Mechanics	3
	ENGR 352	Fund. Of Environmental Engr.	3
	LANG	Language Core Competency III	4
<i>Total</i>			17

6	ENGR 302	Engineering Systems Analysis	2
	ENGR 354	Water Resources Engineering	3
	ENGR 356	Structural Analysis and Design	3
	SELECT	Thematic Core (1 of 3) (2 tags)	4
	BITH 213	New Testament Literature	4
<i>Total</i>			16

7	Elective	Math & Science Elective*	2
	ENGR 451	Senior Design I	4
	ENGR XXX	CEE Engineering Elective	3
	BITH 315	Christian Thought	4
	SELECT	Visual & Performing Art (2 of 2)	2
<i>Total</i>			15

8	ENGR 452	Senior Design II	2
	ENGR 494	Engineering Ethics Capstone	2
		Apply for FE Exam	0
	CORE 3xx	Advanced Int. Seminar (1 tag)	4
	SELECT	Thematic Core (2 of 3) (2 tags)	4
	SELECT	Thematic Core (3 of 3) (2 tags)	4
<i>Total</i>			16

*Total Credit Hours*    129

*Avg. per semester*    16.125

*revised: 3/7/2024*

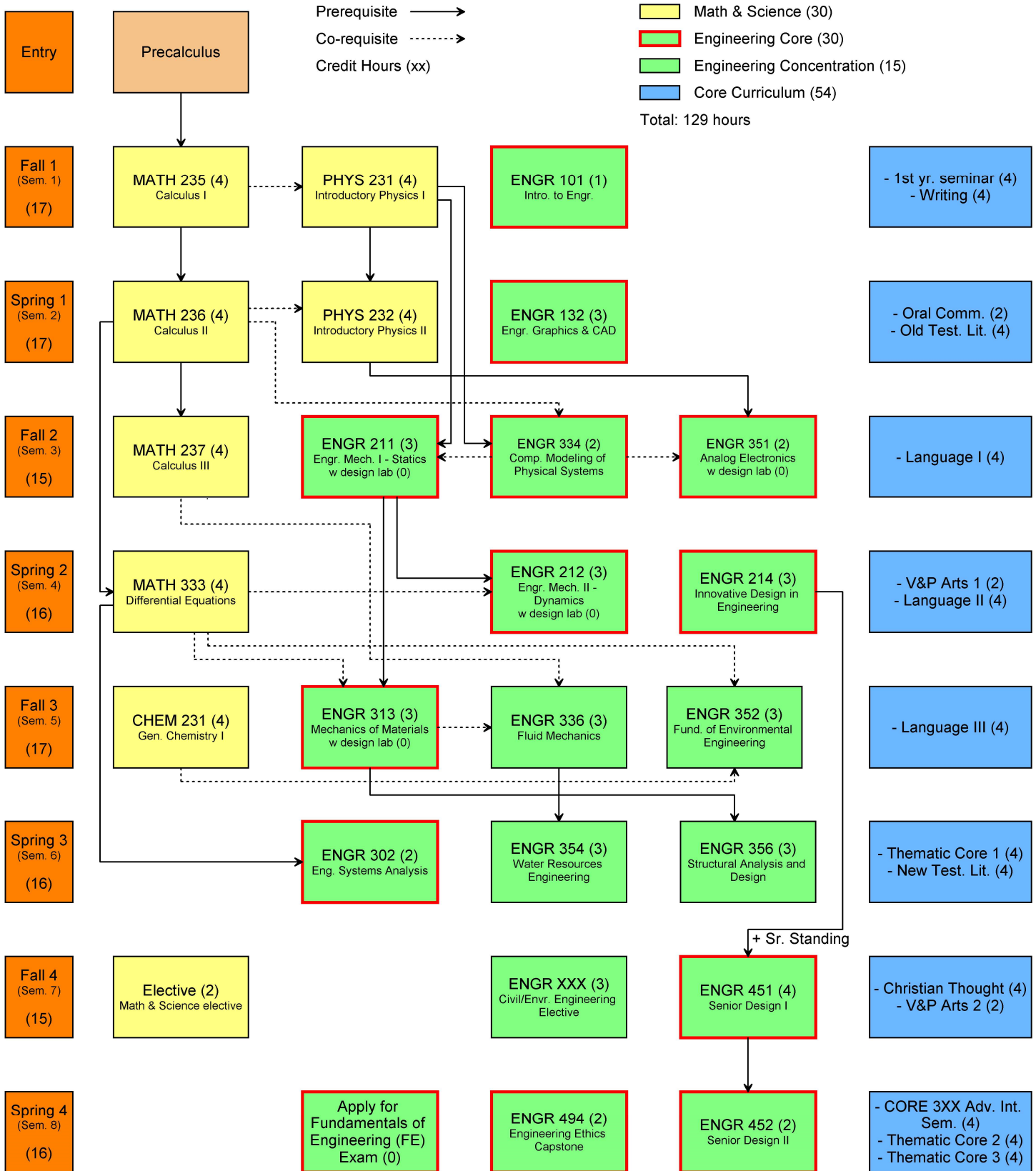
Civil/Environmental Engineering Concentration electives:

ENGR 358	Groundwater Hydrology and Well Hydraulics	2
ENGR 359	Geotechnical Engineering	2
ENGR 215	Materials Science for Engineering	3
ENGR 344	Thermodynamics & Heat Transfer	3
ENGR 495	Independent Study	1-3

\* The Math and Science elective may come from ENGR 271 or courses with prefixes ASTR, BIOL, CHEM, ENVR, GEOL, MATH, and PHYS that are approved by the Physics & Engineering department. Check with your advisor to determine course availability.

# Wheaton College Engineering Civil/Environmental Concentration

Updated March 7, 2024



**Civil/Environmental Engineering Concentration Electives:**

- ENGR 358 Groundwater Hydrology and Well Hydraulics (2)
- ENGR 359 Geotechnical Engineering (2)
- ENGR 215 Materials Science for Engineering (3)
- ENGR 344 Thermodynamics & Heat Transfer (3)
- ENGR 495 Independent Study (1-3)